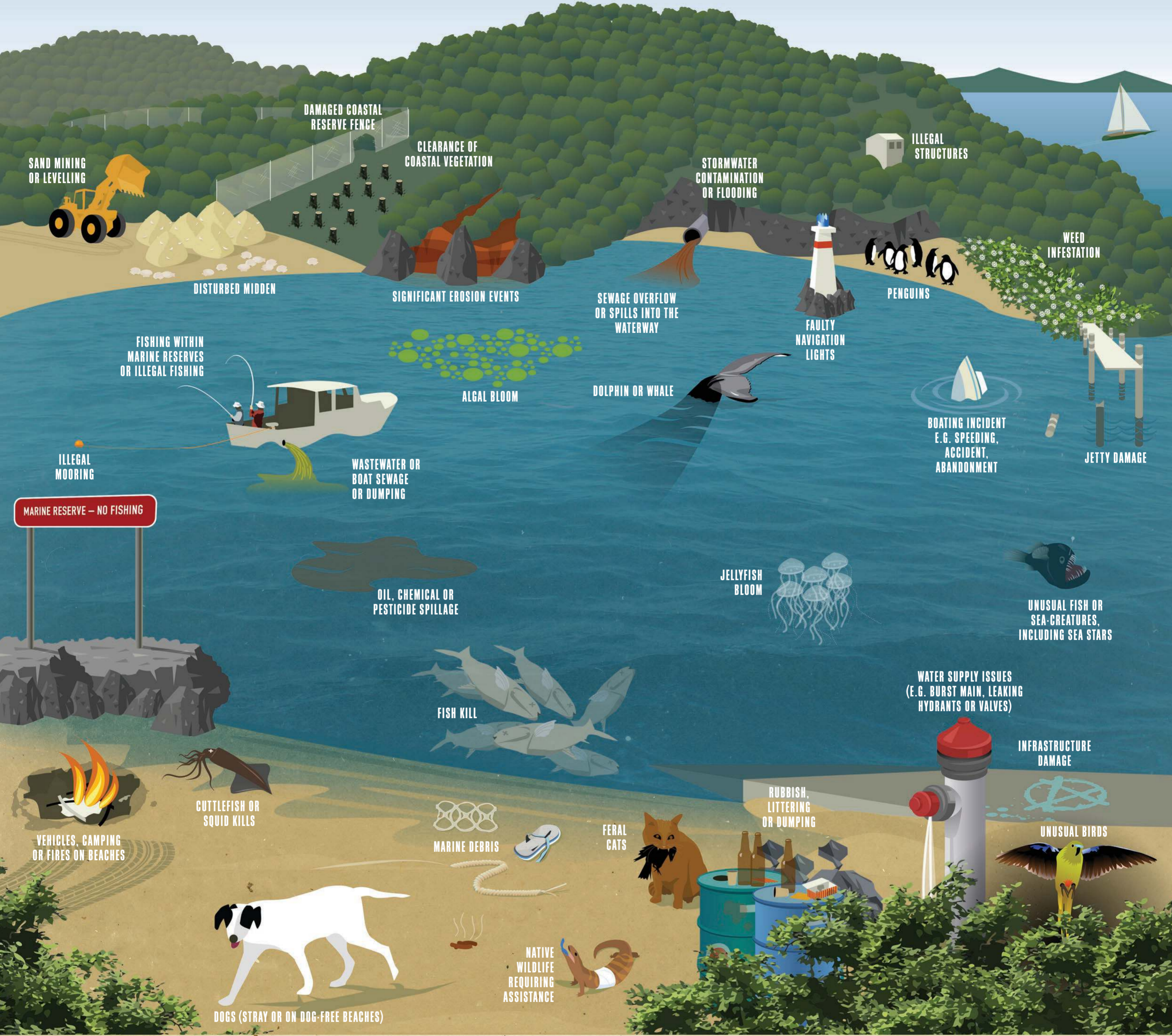


WATCHING OUT FOR OUR WATERWAY



TEN THINGS YOU CAN DO FOR THE WATERWAY

- 1 Report unusual things you see
- 2 Participate in events such as weed identification, Landcare and Coastcare activities, TasMARC and Clean-Up Australia Day
- 3 Maintain fishing and dive records
- 4 Respect rules that protect habitats or native species (e.g. take your dog to designated dog beaches, and apply size limits to fish catches)
- 5 Be aware of any health risks and alerts that may apply to eating wild shellfish or swimming
- 6 Practice safe boating
- 7 Be proactive if you see people or animals in distress
- 8 Moor or store boats as responsibly as possible (e.g. rethink eroding beaches by dragging small boats into foreshore vegetation)
- 9 Leave nothing but footprints
- 10 Value the waterway through actions and words

Reporting helps us understand what is going on and how to respond. Details help validate sightings. Important information includes:

- Location
- Date(s)
- Descriptions - including images where possible
- Advise of records you have for reference purposes (e.g. a log book or journal entry)
- Any relevant identification details including other witnesses
- Your contact details



WHAT YOU MIGHT SEE	CONTACT	WHAT YOU MIGHT SEE	CONTACT	WHAT YOU MIGHT SEE	CONTACT
Boating incident e.g. speeding, accident, abandonment	MAST, via Service Tasmania 1300 135 513 bit.ly/boatReport	Water supply issues (e.g. burst main, leaking hydrants or valves)	TasWater 13 6992	Fishing within marine reserves or illegal fishing	Fishwatch 0427 655 557
Jetty damage		Sewage overflow or spills into the waterway		Birds, including penguins	Birdlife Tasmania tasmania@birdlife.org.au
Faulty navigation lights		Wastewater or Boat sewage/ dumping	EPA pollutant incident 1800 005 171 bit.ly/epaDump	King tides	Witness King Tides Share photos at witnesskingtides.org If damage may require repair please also inform your local council.
Faulty mooring		Oil/chemical/pesticide spillage		Jellyfish bloom	Redmap www.redmap.org.au or email images and details to: tas@redmap.org.au
Stormwater issues	Local Council Kingborough Council (including Bruny Island): 6211 8200 Huon Valley Council: 6264 0300	Algal bloom	EPA litter hotline 1300 135 513 bit.ly/epaLitter	Unusual fish or sea-creatures, including sea stars	
Significant erosion events		Fish kill		Dolphin or whale	Whale Hotline 0427 942 537
Clearance of coastal vegetation		Cuttlefish/squid kills			
Damaged coastal reserve fence		Rubbish littering/ dumping	Bonorong Wildlife Sanctuary 6268 1184		
Disturbed midden		Marine debris			
Illegal structures		Native wildlife requiring assistance			